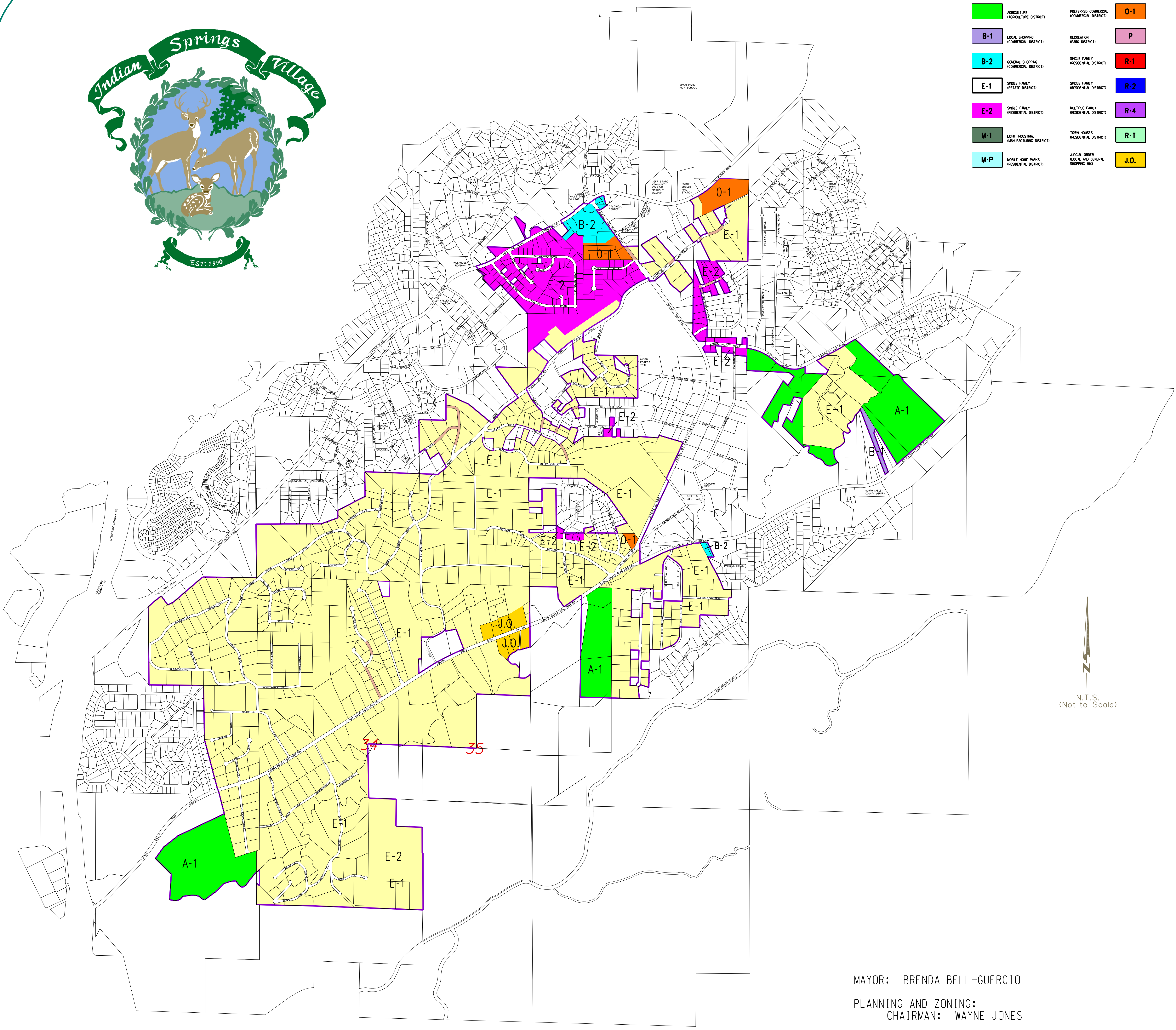




A-1	AGRICULTURE (COMMERCIAL DISTRICT)	O-1	PREFERRED COMMERCIAL (COMMERCIAL DISTRICT)
B-1	LOCAL SHOPPING (COMMERCIAL DISTRICT)	P	RECREATION (PARK DISTRICT)
B-2	GENERAL SHOPPING (COMMERCIAL DISTRICT)	R-1	SINGLE FAMILY (RESIDENTIAL DISTRICT)
E-1	SINGLE FAMILY (RESIDENTIAL DISTRICT)	R-2	SINGLE FAMILY (RESIDENTIAL DISTRICT)
E-2	SINGLE FAMILY (RESIDENTIAL DISTRICT)	R-4	MULTIPLE FAMILY (RESIDENTIAL DISTRICT)
M-1	LIGHT INDUSTRIAL (MANUFACTURING DISTRICT)	R-T	TOWN HOUSES (RESIDENTIAL DISTRICT)
M-P	MOBILE HOME PARKS (RESIDENTIAL DISTRICT)	J.O.	JOB, OFFICE, LOCAL AND GENERAL SHOPPING (MIX)



MAYOR: BRENDA BELL-GUERCIO
 PLANNING AND ZONING:
 CHAIRMAN: WAYNE JONES
 ZONING BOARD OF ADJUSTMENTS:
 CHAIRMAN: JANE MARTIN

HATCH MOTT MACDONALD
 2320 HIGHLAND AVENUE SOUTH, SUITE 175
 BIRMINGHAM, ALABAMA 35205
 (205) 939-1119

INDIAN SPRINGS VILLAGE
 ZONING MAP
 The zoning hereon
 is effective September 14, 2009